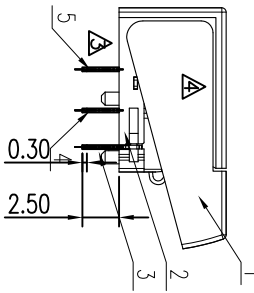
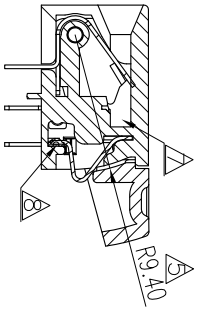
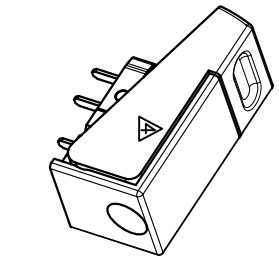
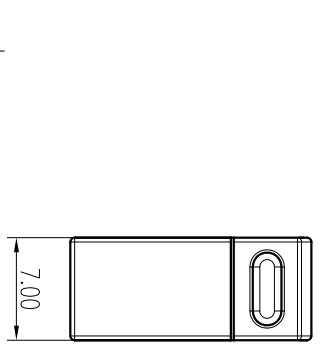


REV	ECN	CONTENT	CHECK	DATE
V0.0		ORIGINAL	ZY	2019.03.26
V2.0		Change appearance	ZY	2019.04.02
V3.0		Change Corner	ZY	2019.05.17



REV	ECN	CONTENT	CHECK	DATE
V4.0		Change appearance	ZY	2019.06.11
V5.0		Change specification	ZY	2019.09.18
V6.0		New part number	Cain	2020.04.24
V7.0		Change part number	Cain	2021.03.18
V8.0		Change part number	Cain	2021.09.23

**ELECTRICAL:**

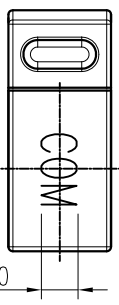
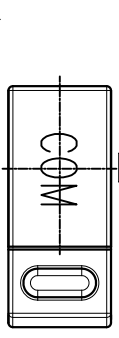
1. Rated voltage: 24V~36VDC, 110~220VAC
2. Rated current: 10A
3. Contact resistance: 20mΩ
4. Withstanding voltage: AC1250V/1min
5. Wire range: 24(Ø0.5mm)~18AWG(SOLID)  $\Delta$
6. RoHS Compliance

**MECHANICAL**

1. Temp. range: -40°C ~ +105°C
2. Mechanical Life: 1000 cycles
3. Color : Pantone cool gray 6C
4. Texture: MT11003
5. Reflow soldering > 260±5°

**HOW TO ORDER**

KF1050-X-7.0-03-XX  
 Series No.    Pitch    Version  
 Color of material: E:Gray/Pantone cool gray 6C)  
 Color of printing: E:Gray/Pantone cool gray 1C)  
 Serial No.    00:No words  
 01:+  
 02:-  
 03:NO  
 04:COM  
 05:NC



$\Delta$  KF1050-E-7.0-03-E03B 03:NO  
 $\Delta$  KF1050-E-7.0-03-E04B 04:COM  
 $\Delta$  KF1050-E-7.0-03-E05B 05:NC

APP.	Cain	DATE	2019.03.26	NAME	KF1050-7.0-XX-XXXX
CHK.	LJ	DATE <td>2019.03.25</td> <td></td> <td></td>	2019.03.25		
DWG.	ZY	DATE <td>2019.03.22</td> <td>DWGNO.</td> <td>W-KF1050</td>	2019.03.22	DWGNO.	W-KF1050
UNITS	MM	SCALE	1:1	SHEET	1/1
				PROJECTION-METHOD	$\Phi$

General Tolerance in mm		radii and chamfers		shorter angle side	
over	to	over	to	over	to
±0.15	±0.2	±0.25	±0.3	±0.5	±0.8
3	6	120	400	10	50
0.5	3	30	120	10	50
to	to	to	to	to	to
6	30	6	1000	10	120
6	30	3	3	10	50
over	over	over	over	over	over
3	6	0.5	3	6	10
over	over	over	over	over	over
3	6	3	6	6	10
over	over	over	over	over	over
0.5	3	3	6	6	10
to	to	to	to	to	to
6	30	±0.2	±0.5	±1°	±1°
over	over	over	over	over	over
3	6	±0.25	±0.3	±1°	±1°
to	to	to	to	to	to
6	30	±0.25	±0.3	±1°	±1°
over	over	over	over	over	over
3	6	0.5	3	6	10
to	to	to	to	to	to
6	30	0.5	3	6	10
over	over	over	over	over	over
3	6	0.5	3	6	10
to	to	to	to	to	to
6	30	0.5	3	6	10

**DFE**  
 凱峰電子有限公司 / 易連(台灣)  
 CIXI KAIFENG ELECTRONIC CO. LTD