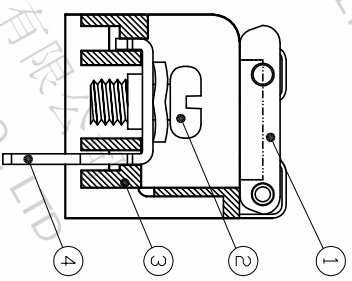
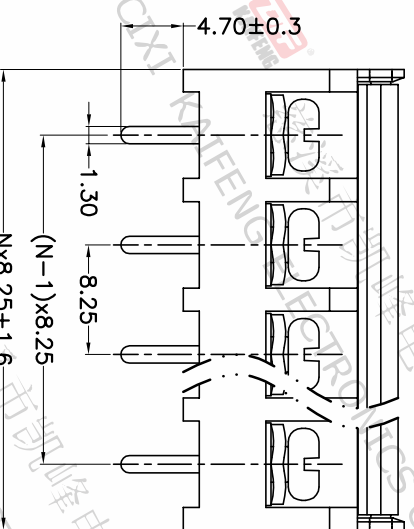
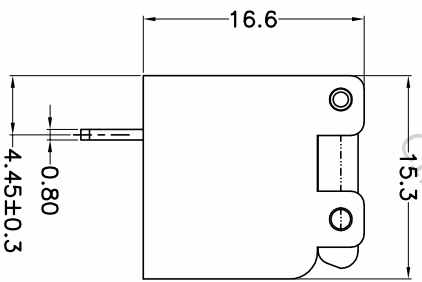
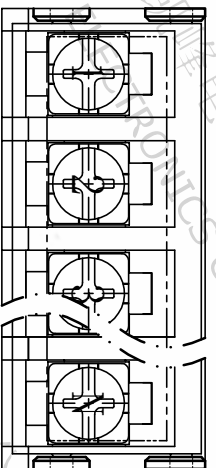


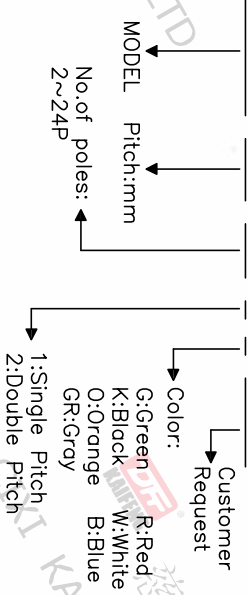
| REV. | DESCRIPTION | DATE | DRAFTER | APPROVER |
|------|-------------|------------|---------|----------|
| A1 | DWG.REL | 2020.05.18 | LiuZH | JIN |



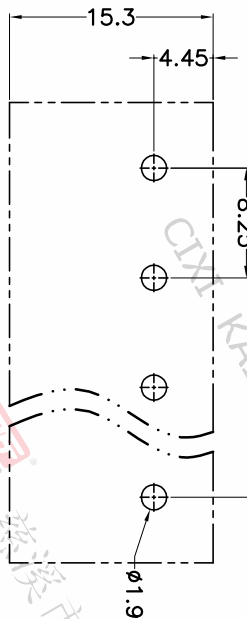
- Material
 - ØCover : PC
 - ØScrews : M3.5 steel, Ni plated
 - ØHousing : PA66, UL94V-0
 - ØTerminal : Brass, Tin plated
- Electrical
 - UL IEC
 - Rated voltage : 300V 450V
 - Rated current : 20A 24A
 - Contact resistance : 20mΩ(Max)
 - Insulation resistance: 500MΩ/DC500V
 - Withstanding Voltage : AC2000V/1min
 - Wire range: 22-12AWG 2.5mm²
- Mechanical
 - Operating temperature: -40°C ~ +105°C
 - Soldering temperature: 250°C±5/5sec
 - Torque: 0.8N.m (7.02Lb.in)
- RoHS compliance

HOW TO ORDER

HB-825M-8.25-XXP-1 X-XXXXX



P.C.B.LAYOUT



| Pitch range | Nominal dimension range | PROJECTION | UNIT |
|-------------|-------------------------|------------|------|
| >0 | >0 | 0.1/10 | mm |
| ~6 | >10 | | |
| ~10 | ~24 | | |
| ~15 | ~30 | | |
| ~20 | ~60 | | |
| ~25 | ~100 | | |
| ~30 | ~150 | | |
| ±0.15 | ±0.30 | ±2° | |
| ±0.20 | ±0.30 | | |
| ±0.30 | ±0.50 | | |
| ±0.40 | ±0.70 | | |
| ±0.50 | ±1.00 | | |
| ±0.60 | ±1.30 | | |

DFE 慈溪市凯峰电子有限公司
CIXI KAIFENG ELECTRONICS CO.,LTD

DRAWING TYPE: CUSTOMER DRAWING
SCALE: 1:1 SHEET: 1 OF 1
DRAWING NO.: W12000132

TITLE: HB-825M-8.25-XXP-1X
SHEET SIZE: A4
SERIES: HB-8.25M