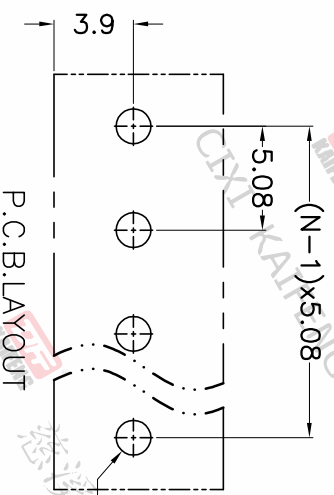
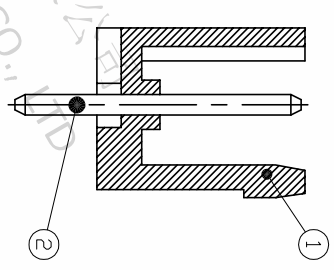
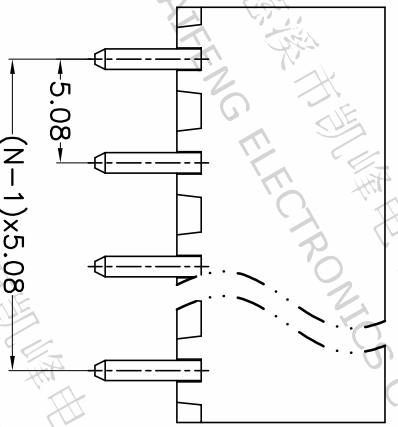
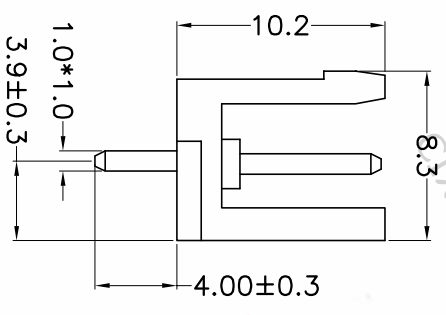
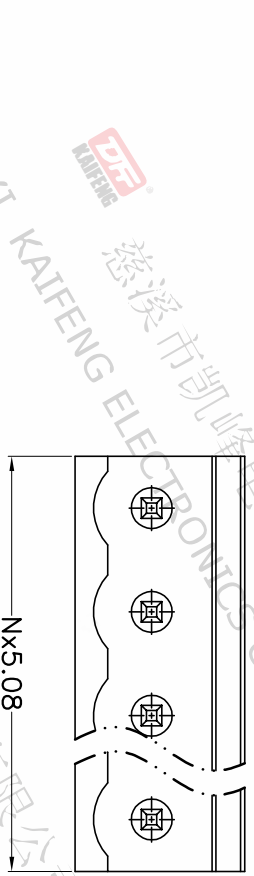


REV.	DESCRIPTION	DATE	DRAFTER	APPROVER
A1	DWG.REL	2020/5/18	ZHANG	JIN



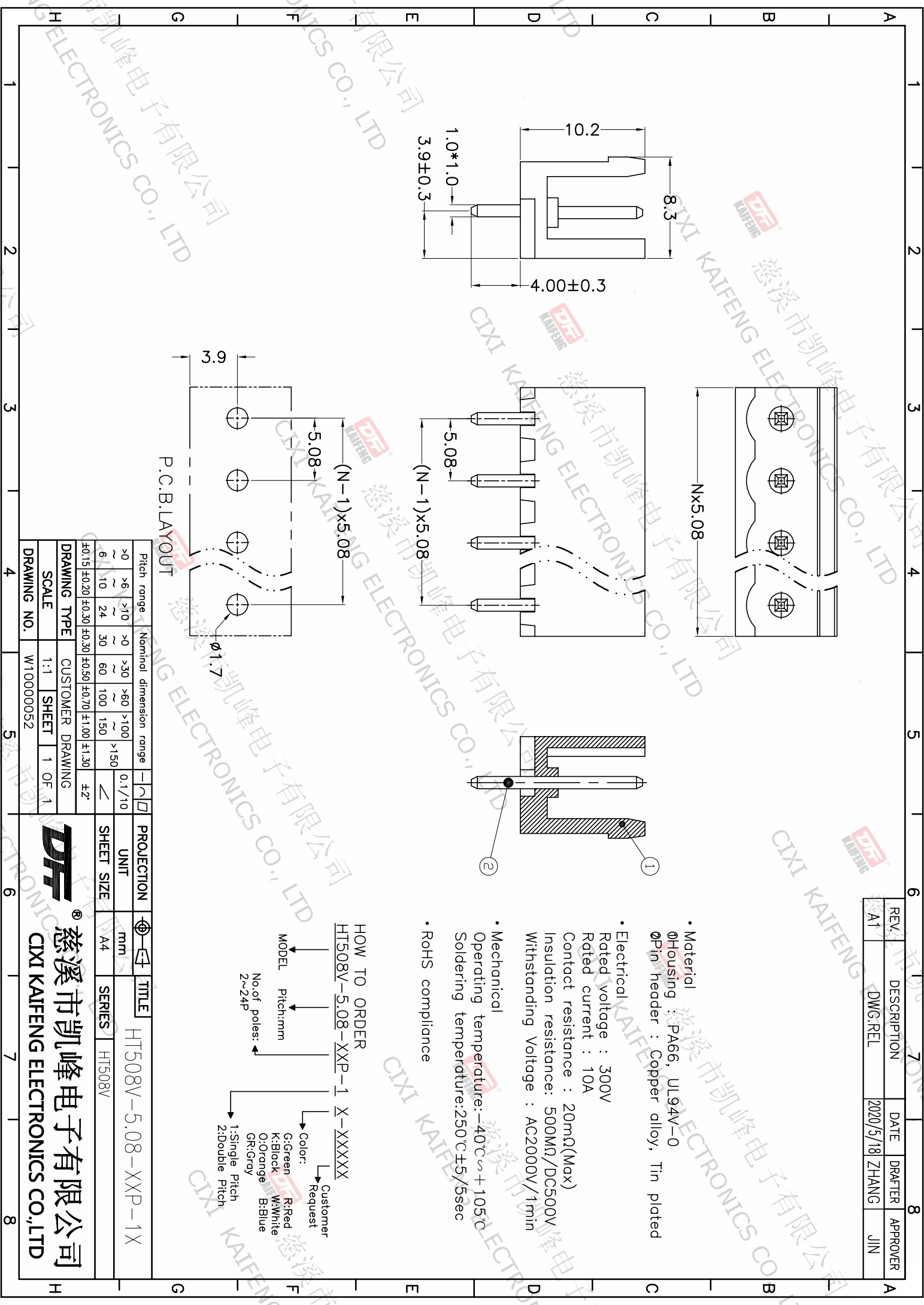
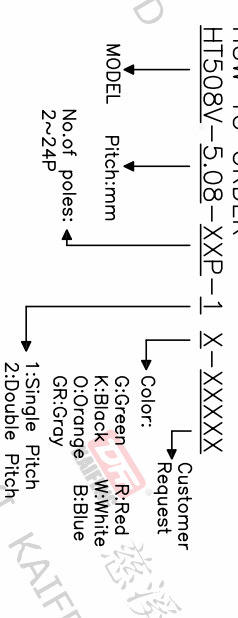
P.C.B.LAYOUT

Pitch range	Nominal dimension range	PROJECTION
>0	>30	0.1/10
~6	~60	0.1/10
~10	~100	0.1/10
~24	~150	0.1/10
±0.15	±0.30	±2°

DRAWING TYPE	CUSTOMER DRAWING	SHEET	1 OF 1
SCALE	1:1	SHEET	1 OF 1
DRAWING NO.	W10000052		

- Material
 ◦Housing : PA66, UL94V-0
 ◦Pin header : Copper alloy, Tin plated
- Electrical
 Rated voltage : 300V
 Rated current : 10A
 Contact resistance : 20mΩ(Max)
 Insulation resistance: 500MΩ/DC500V
 Withstanding Voltage : AC2000V/1min
- Mechanical
 Operating temperature: -40°C ~ +105°C
 Soldering temperature: 250°C ± 5/5sec
- RoHS compliance

HOW TO ORDER



慈溪市凯峰电子有限公司
 CIXI KAIFENG ELECTRONICS CO., LTD

DFE
 慈溪市凯峰电子有限公司
 CIXI KAIFENG ELECTRONICS CO.,LTD