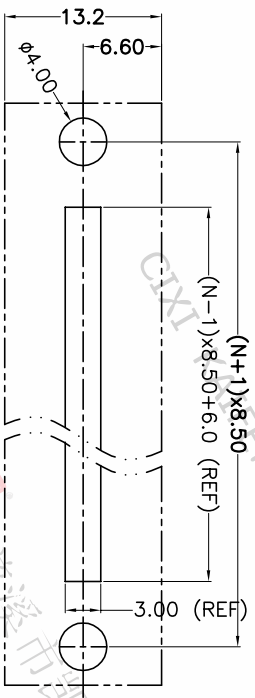
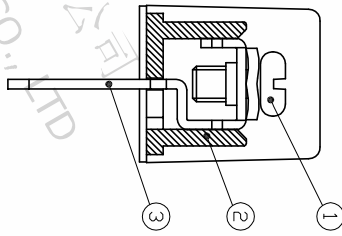
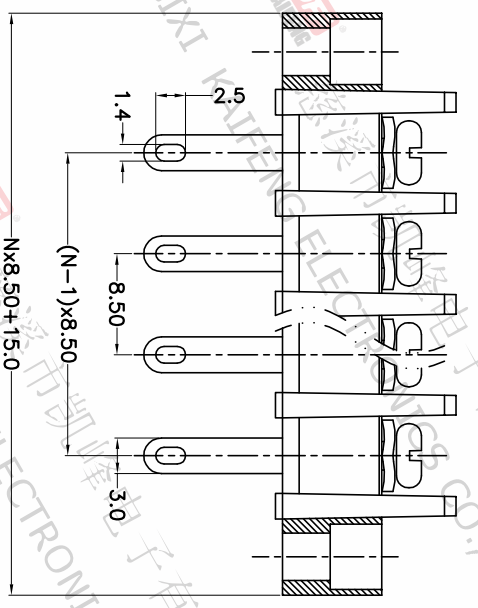
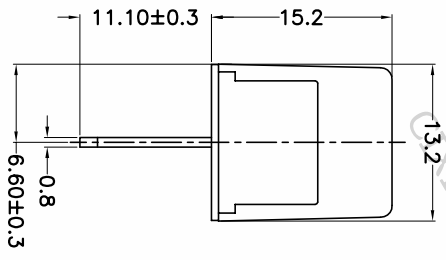
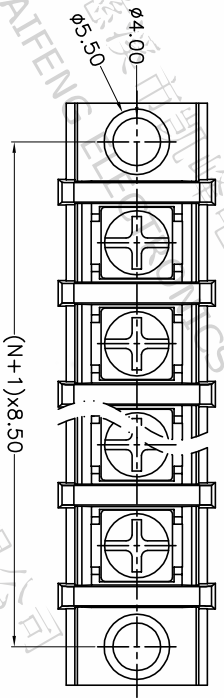


| REV. | DESCRIPTION | DATE | DRAFTER | APPROVER |
|------|-------------|------------|---------|----------|
| A1 | DWG.REL | 2020.05.21 | LIUZH | JIN |



P.C.B.LAYOUT

| Pitch range | Nominal dimension range | PROJECTION |
|-------------|-------------------------|------------|
| >0 | >0 | 0.1/10 |
| >6 | >30 | 0.1/10 |
| >10 | >60 | 0.1/10 |
| 6 | 10 | 0.1/10 |
| 24 | 30 | 0.1/10 |
| 30 | 60 | 0.1/10 |
| 100 | 100 | 0.1/10 |
| 150 | 150 | 0.1/10 |
| ±2' | ±1.00 | ±2' |
| ±1.30 | ±1.30 | ±2' |

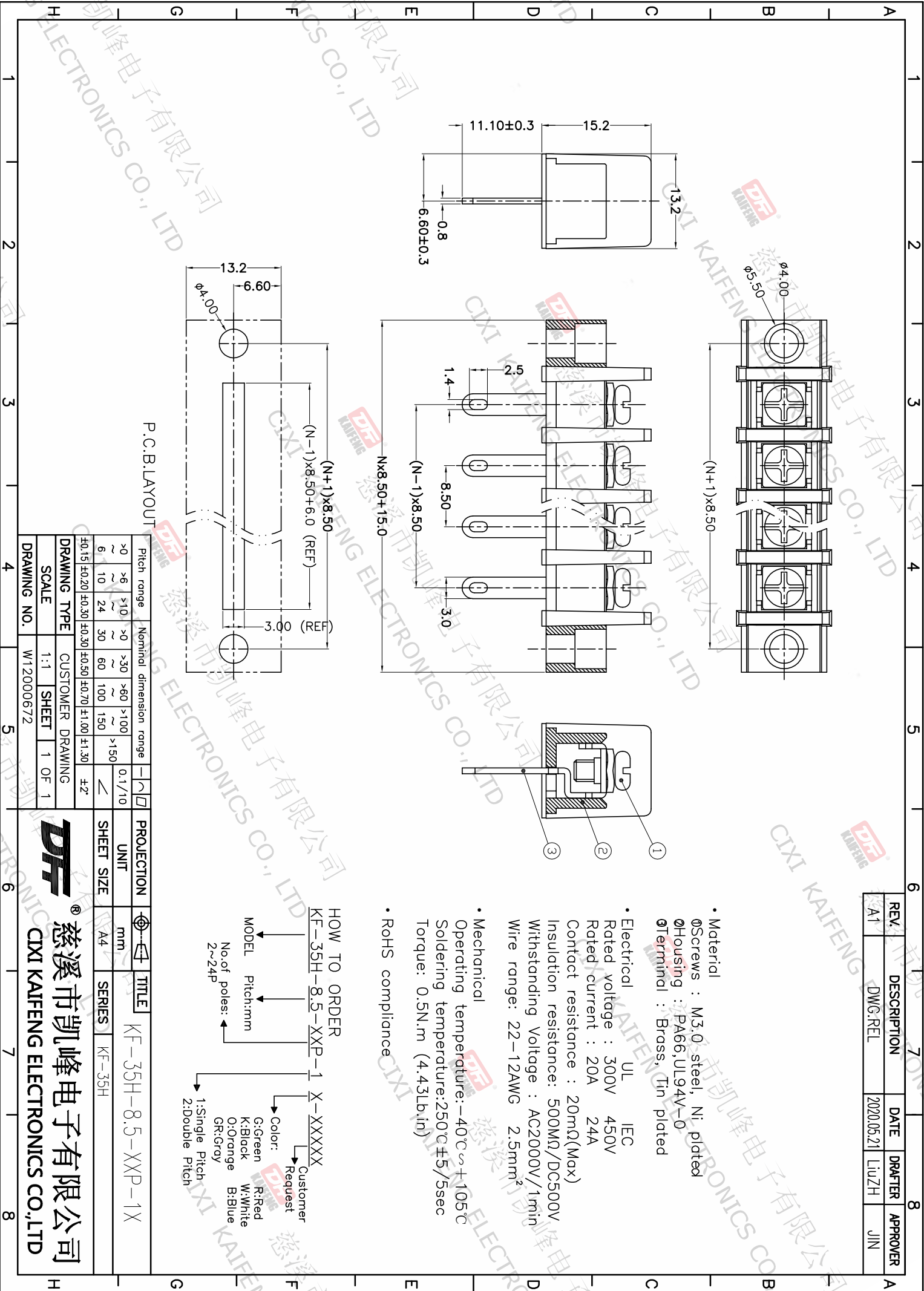
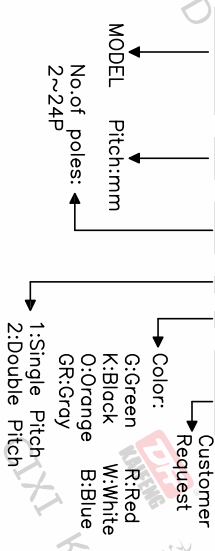
| DRAWING TYPE | CUSTOMER DRAWING |
|--------------|------------------|
| SCALE | 1:1 |
| DRAWING NO. | W12000672 |

| PROJECTION | TITLE |
|------------|-------------------|
| UNIT | mm |
| SHEET SIZE | A4 |
| SERIES | KF-35H |
| MODEL | KF-35H-8.5-XXP-1X |

- Material
 - ① Screws : M3.0 steel, Ni plated
 - ② Housing : PA66, UL94V-0
 - ③ Terminal : Brass, Tin plated
- Electrical
 - UL IEC
 - Rated voltage : 300V 450V
 - Rated current : 20A 24A
 - Contact resistance : 20mΩ(Max)
 - Insulation resistance: 500MΩ/DC500V
 - Withstanding Voltage: AC2000V/1min
 - Wire range: 22-12AWG 2.5mm²
- Mechanical
 - Operating temperature: -40°C ~ +105°C
 - Soldering temperature: 250°C ±5/5sec
 - Torque: 0.5N.m (4.43Lb.in)
- RoHS compliance

HOW TO ORDER

KF-35H-8.5-XXP-1X-XXXXXX



慈溪市凯峰电子有限公司
CIXI KAIFENG ELECTRONICS CO., LTD

DF 慈溪市凯峰电子有限公司
CIXI KAIFENG ELECTRONICS CO., LTD