

REV.	DESCRIPTION	DATE	DRAFTER	APPROVER
A1	DWG.REL	2020.05.29	DENG	JIN

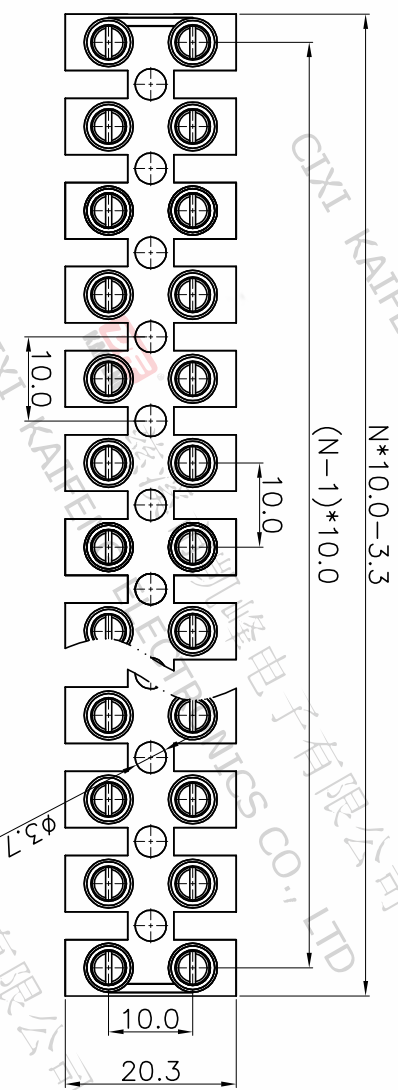
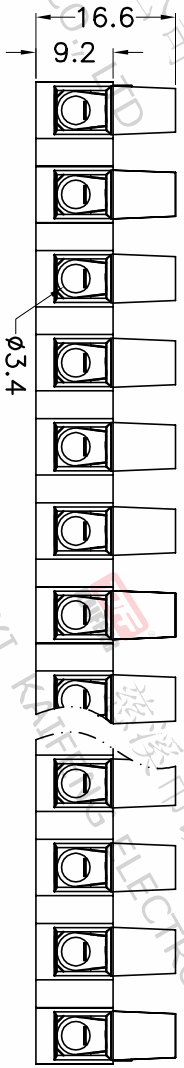
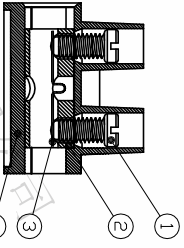
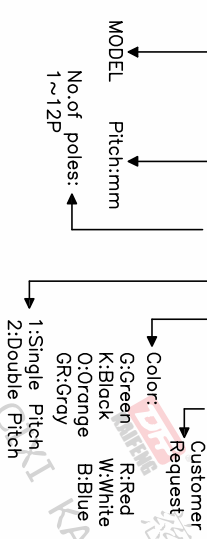
- Material
 ØScrews : M3.0 steel, Zinc plated
 ØClamp : Brass, Ni plated
 ØHousing : PA66, UL94V-2

- Electrical
 UL IEC
 Rated voltage : 300V 400V
 Rated current : 20A 41A
 Wire range: 18-12AWG 1.0~6.0mm²
 Withstanding Voltage : AC1600V/1min

- Mechanical
 Operating temperature: -40°C~+110°C
 Soldering temperature: 250°C±5/5sec
 Torque: 0.5N.m (4.43lb.in)
 Strip length: 6-7mm

• RoHS compliance

HOW TO ORDER
 KF10HWP-10.0-XXP-1 X-XXXXXX



Pitch range	Nominal dimension range	0.1/10
>0	>0	0.1/10
~6	~30	0.1/10
~10	~60	0.1/10
~24	~100	0.1/10
~30	~150	0.1/10
±0.15	±0.30	±2°
±0.20	±0.30	±2°
±0.30	±0.50	±2°
±0.70	±1.00	±2°
±1.30	±1.30	±2°

DRAWING TYPE	CUSTOMER DRAWING
SCALE	1:1
SHEET	1 OF 1
DRAWING NO.	W18000072
PROJECTION	TITLE
UNIT	KF10HWP-10.0-XXP-1X
SHEET SIZE	mm
A4	
SERIES	
KF10H	

DF 慈溪市凯峰电子有限公司
 CIXI KAIFENG ELECTRONICS CO.,LTD

