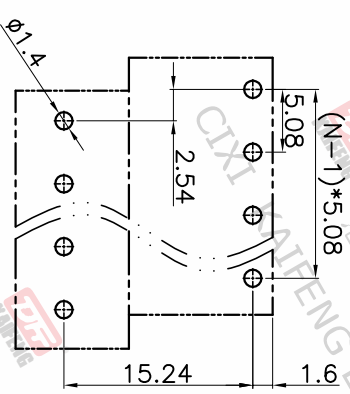
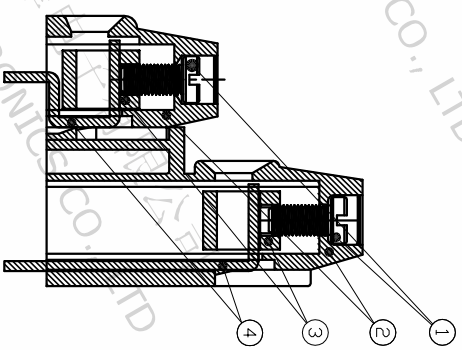
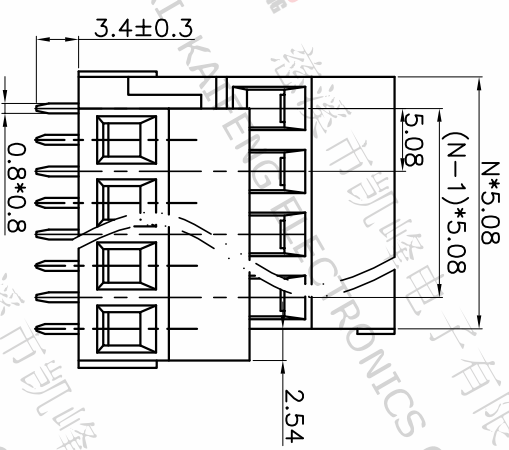
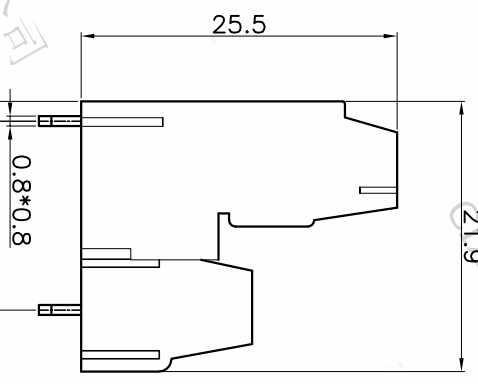
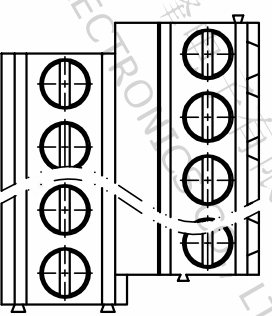


REV.	DESCRIPTION	DATE	DRAFTER	APPROVER
A1	DWG.REL	2020.05.19	DENG	JIN



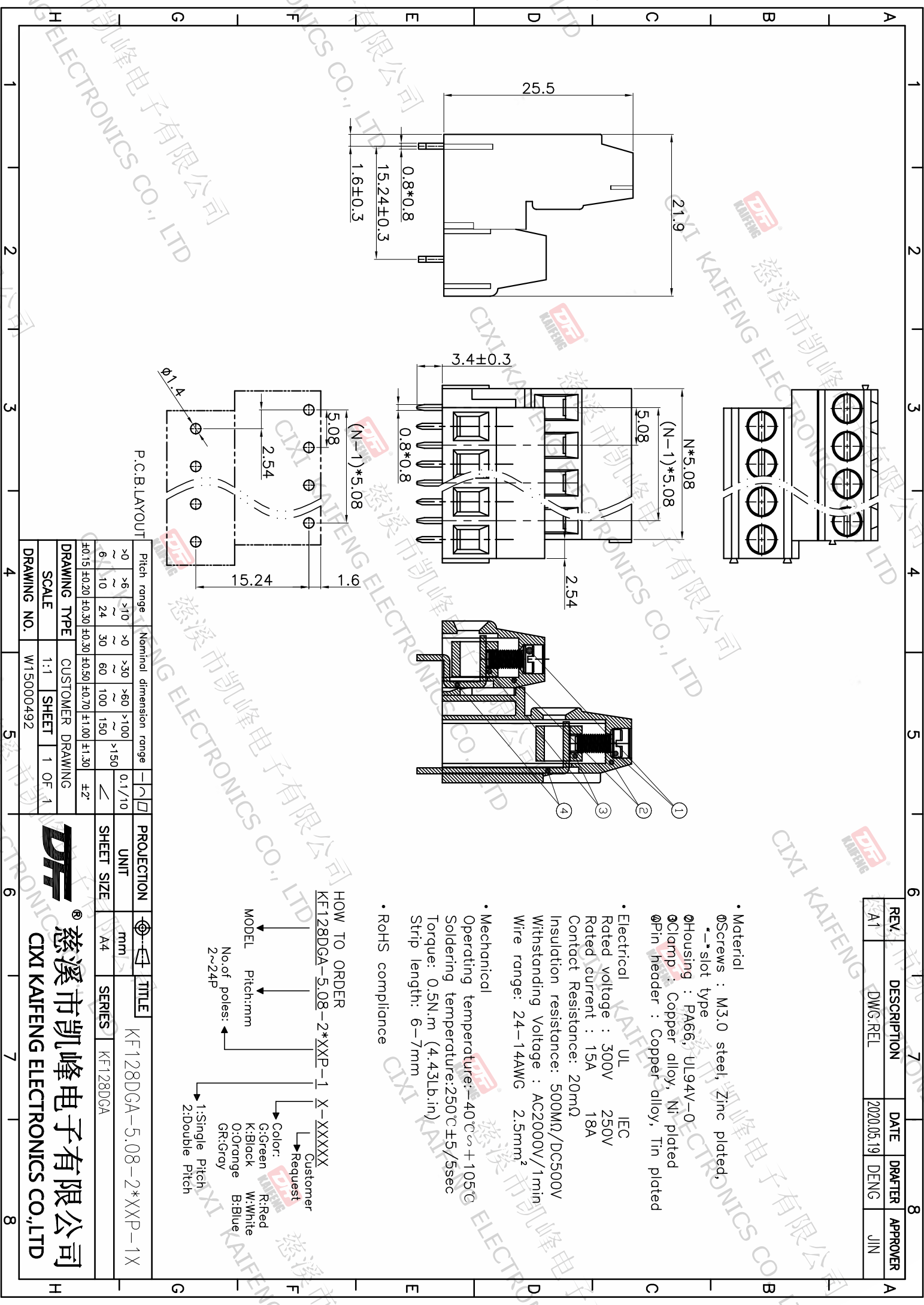
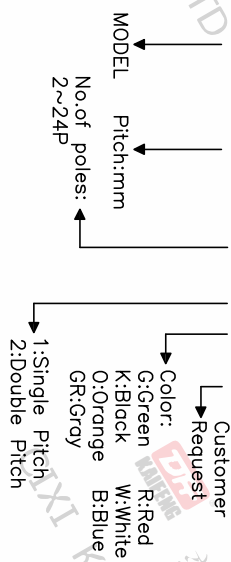
P.C.B. LAYOUT

Pitch range	Nominal dimension range	PROJECTION
>0	>0	0.1/10
~6	~30	□
~10	~60	□
~24	~100	□
~30	~150	□
±0.15	±0.30	±2°
±0.20	±0.50	□
±0.30	±0.70	□
	±1.00	□
	±1.30	□

DRAWING TYPE	SCALE	SHEET	TITLE
CUSTOMER DRAWING	1:1	1 OF 1	KF128DGA-5.08-2*XXP-1X
DRAWING NO.			UNIT
W15000492			mm
			SHEET SIZE
			A4
			SERIES
			KF128DGA

- Material
  - ØScrews : M3.0 steel, Zinc plated,
  - slot type
  - ØHousing : PA66, UL94V-0
  - ØClamp : Copper alloy, Ni plated
  - ØPin header : Copper-alloy, Tin plated
- Electrical
  - UL IEC
  - Rated voltage : 300V 250V
  - Rated current : 15A 18A
  - Contact Resistance: 20mΩ
  - Insulation resistance: 500MΩ/DC500V
  - Withstanding Voltage : AC2000V/1min
  - Wire range: 24—14AWG 2.5mm<sup>2</sup>
- Mechanical
  - Operating temperature: -40℃~+105℃
  - Soldering temperature: 250℃±5/5sec
  - Torque: 0.5N.m (4.43lb.in)
  - Strip length: 6—7mm
- RoHS compliance

HOW TO ORDER  
KF128DGA-5.08-2\*XXP-1 X-XXXXX



慈溪市凯峰电子有限公司  
CIXI KAIFENG ELECTRONICS CO., LTD

**DFE** 慈溪市凯峰电子有限公司  
CIXI KAIFENG ELECTRONICS CO.,LTD